

An expansive three-level townhome with optional garage, The Coventry demonstrates what imagination can do for townhome living.

From the moment you step into the foyer, you experience a feeling of orderliness—everything is in its proper place. The step-down living room is separated from the dining room by graceful wood railings. The fully appointed kitchen serves with equal ease both the adjoining breakfast room and dining room. A powder room and coat closet complete this level.

The lower level offers a large recreation room with fireplace. A garage or storage room and a full bath are optional.

The second story offers two plans: twin master suites with private baths (one with garden tub and separate shower), or a three bedroom design in which the master bath features twin vanities and a garden tub with separate shower.

An optional skylit loft that overlooks the master suite is also available.

# The Coventry

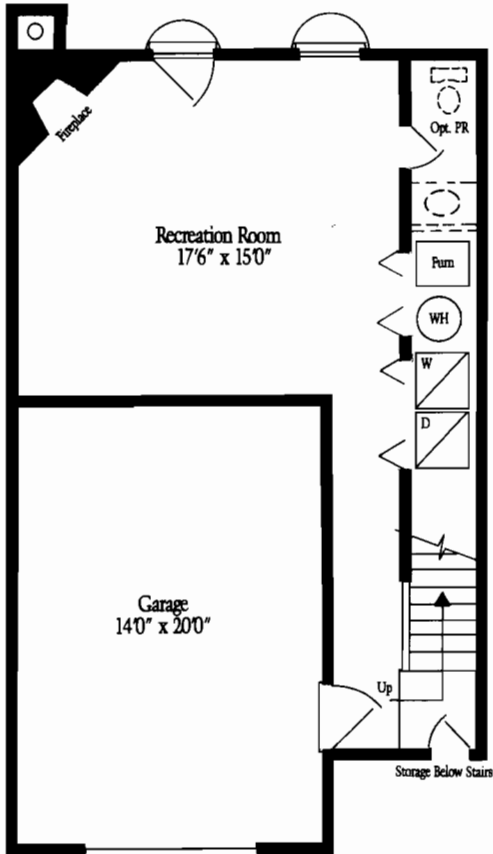
*A fluid design that makes for 3-levels of comfort.*



The Coventry II—Elevation A



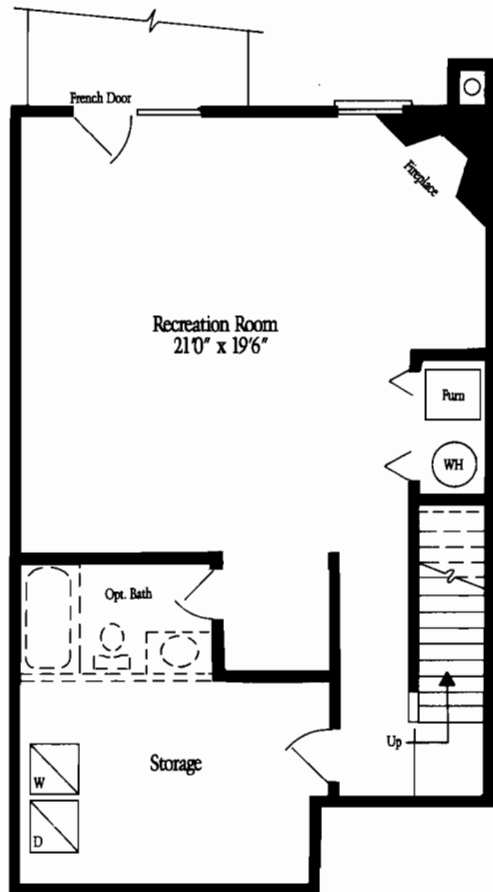
The Coventry II—Elevation B



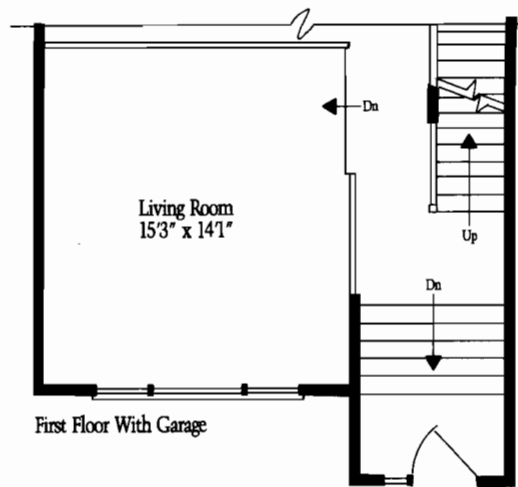
Basement Level with Garage



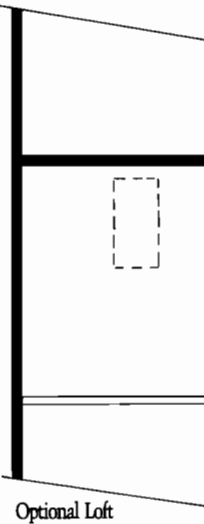
The Coventry I—Elevation A



Basement Level



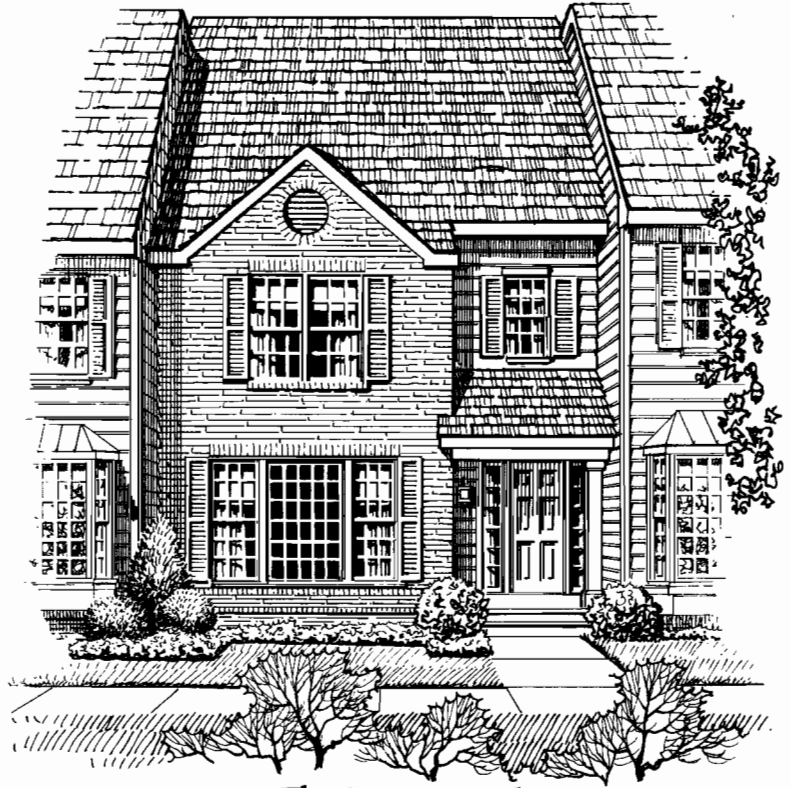
First Floor With Garage



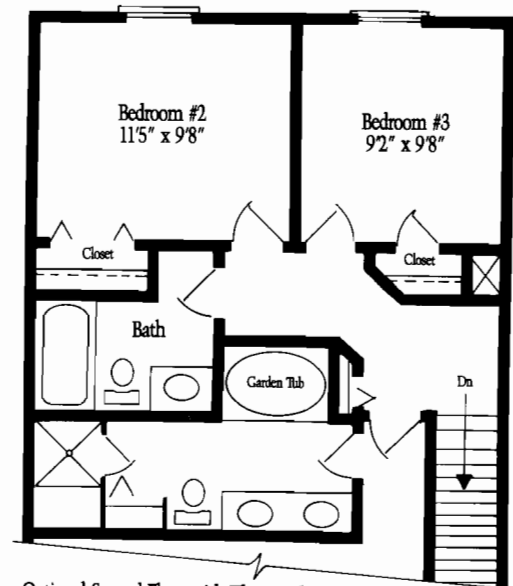
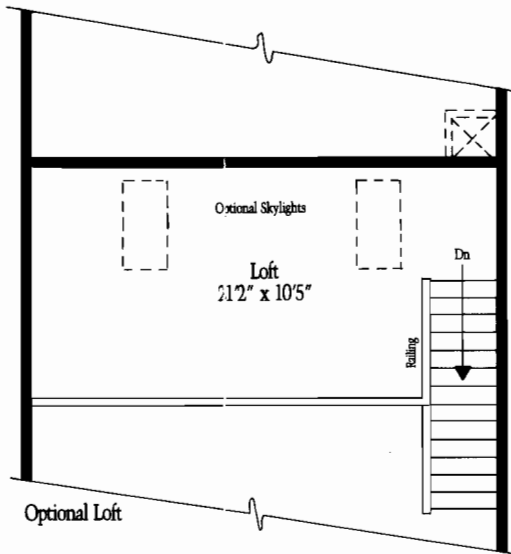
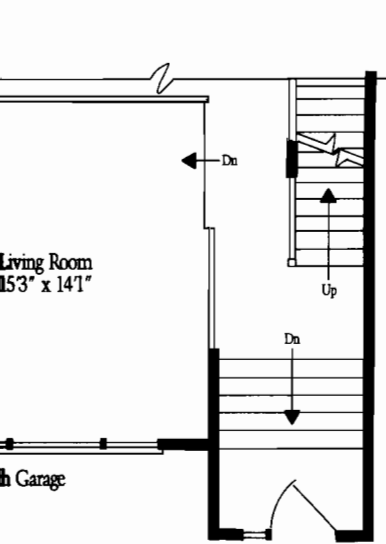
Optional Loft

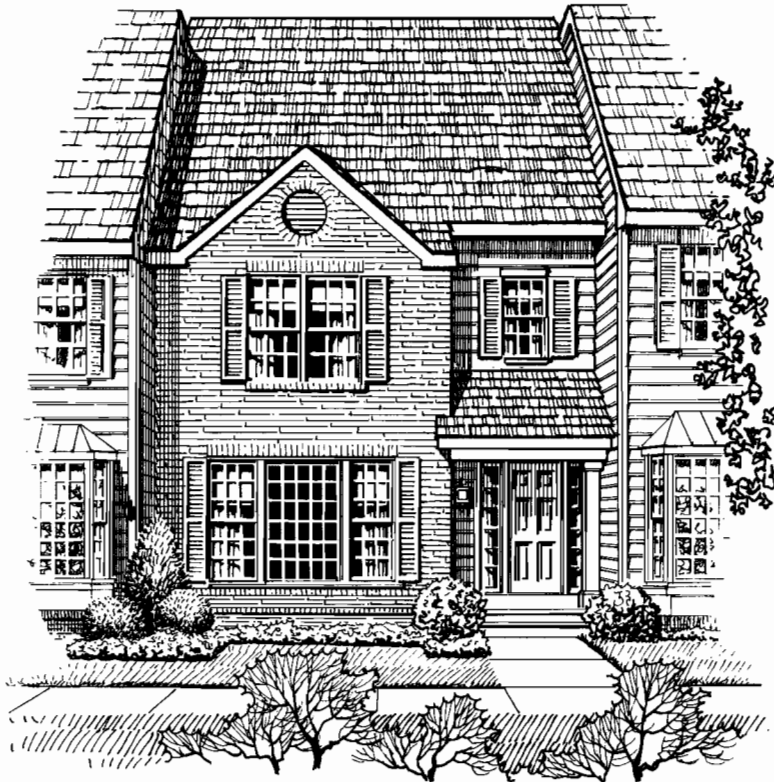


The Coventry I—Elevation A

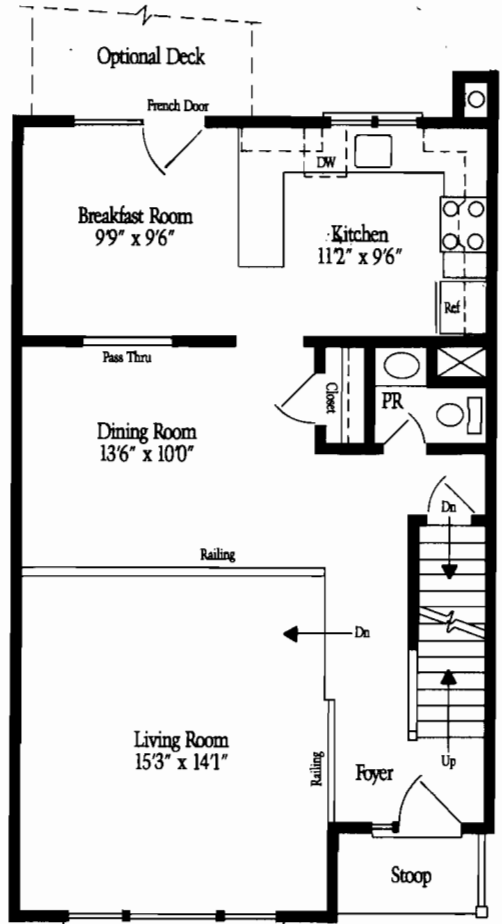


The Coventry I—Elevation B

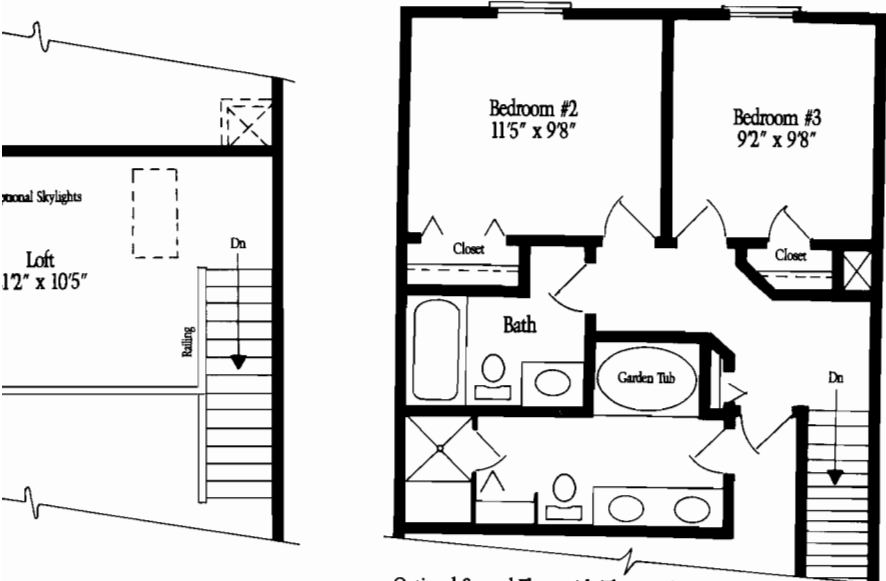




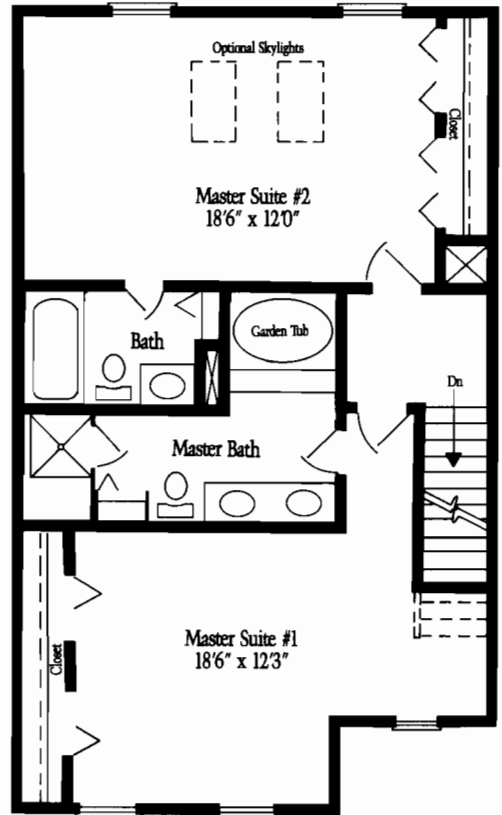
The Coventry I—Elevation B



First Floor



Optional Second Floor with Three Bedrooms



Second Floor with Twin Master Suites

# Standard Features.

## *Custom Exterior:*

- Predetermined coordinating exterior colors
- Brick and rough-sawn cedar siding
- Landscaped lots with foundation plantings
- Rust-proof aluminum gutters and downspouts
- Side yard fencing.

## *Custom Energy-Saving Package:*

- R-30 attic insulation
- R-13 exterior walls
- Quality wood windows
- Triple-track storm windows with screens

# Luxurious, ultra-spacious garage townes in Reston.

- Insulated metal front door
- Thermal insulated French doors
- Economical gas furnace for heating
- Central air conditioning

## *Deluxe Kitchens:*

- G.E. 18 cu. ft. energy-saver frost-free refrigerator with automatic icemaker
- G.E. sound-insulated, dual-cycle energy-saver dishwasher
- G. E. disposal
- G. E. double oven electric range with self-cleaning lower oven

- Stainless steel sink with single-lever faucet
- Wood cabinets
- Easy-clean laminated self-edge countertops

## *Deluxe Bathrooms:*

- Garden tubs and shower stalls
- Vanities with cultured marble tops
- Vanity mirrors
- Ceramic tile floors and tub and shower surrounds

## *Flooring:*

- Wall-to-wall carpeting in a wide selection of colors in designated areas
- Resilient no-wax floors in kitchen and foyer

## *Interior Features:*

- Wood-burning fireplace in recreation room
- Six-panel colonial doors
- Smoke detector
- Cathedral ceilings
- Step-down living room
- Decorator lighting fixtures
- Wood banisters and stair handrails
- Window shades
- Deadbolt locks

## *Laundry:*

- 220-volt outlet for dryer
- Dryer vent
- Washer hook-up

## *General:*

- Fixed TV antenna locations with antenna wire terminating in attic
- Prewired telephone locations
- 200-AMP circuit breaker electrical system
- Exterior 110-volt waterproof receptacle in rear
- Front and rear hose bibs
- Economical gas hot water heater
- Rough-in plumbing in basement

## *Community:*

- Underground utilities
- Curb, gutter and sidewalks
- County water and sewer