

The ideal residence for the family that entertains, The Dorchester puts every room exactly where it ought to be.

Up a quick flight of steps from the foyer, this 3-level home opens into a formal dining room which overlooks a full 21-ft.-wide living room. The over-size gourmet kitchen includes a breakfast nook

with bay window and pass thru to the dining room. A powder room off the foyer complete this level.

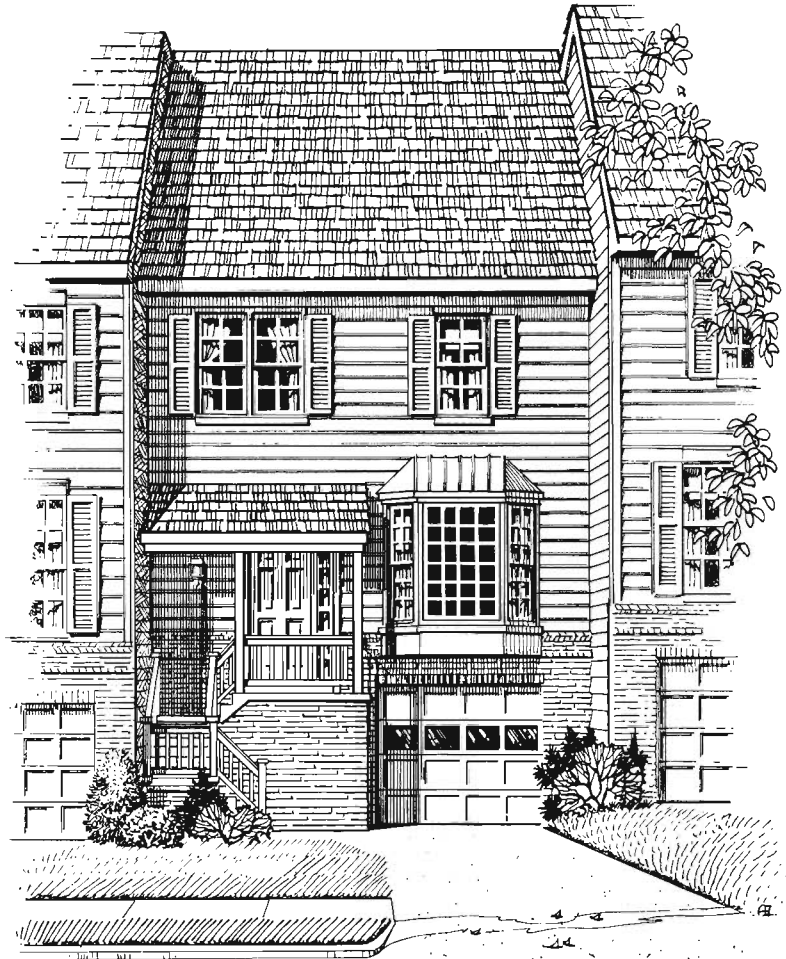
The lower level offers a spacious recreation room with fireplace, laundry and utility closets and a storage room. Options include a garage, den, powder room or full bath with tub.

The bedroom level offers two plans: a twin master suite configuration, each with a cathedral ceiling and optional skylights, ample closet space and a private full bath with tub; or a three bedroom design in which the master suite has a huge walk-in closet and a bath with twin vanity, garden tub and separate shower.

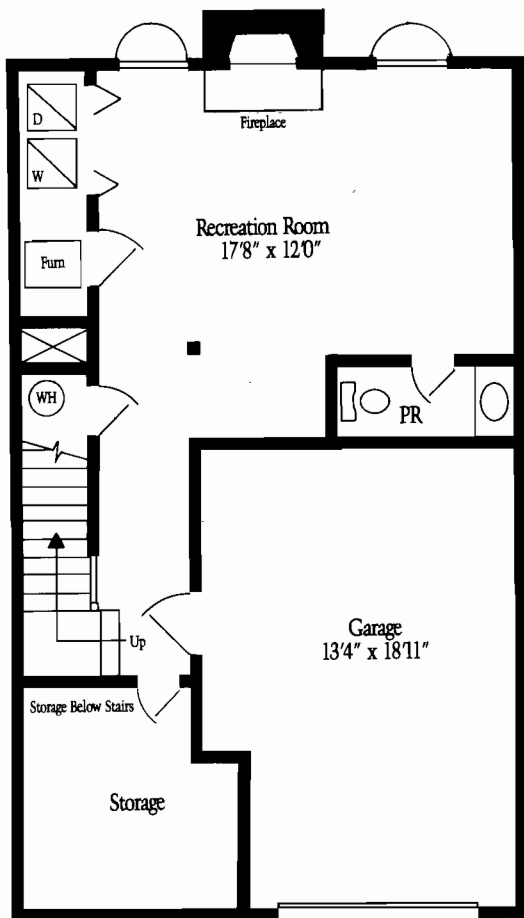
An optional loft adds a luxurious touch to your master suite and serves as the perfect reading or television watching retreat.

The Dorchester:

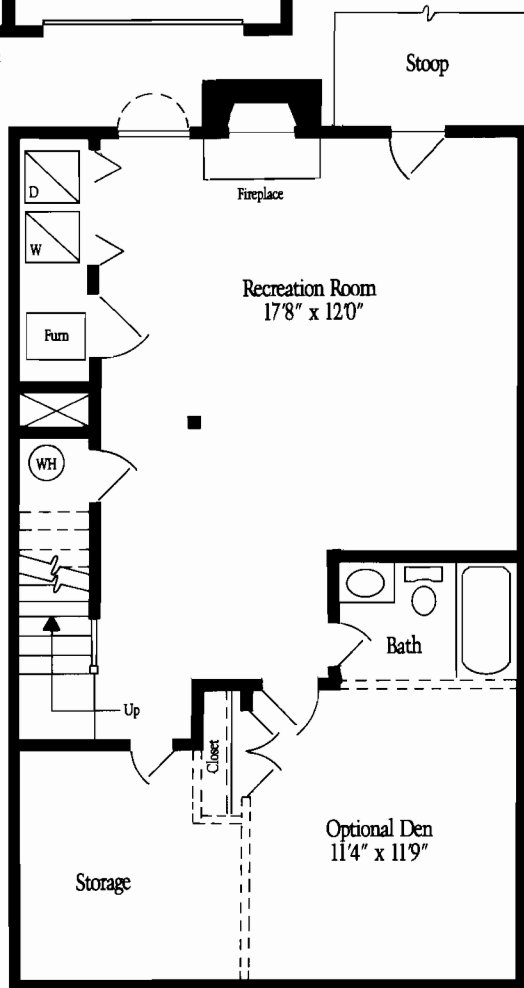
A luxurious townhome with spacious entertaining areas.



The Dorchester II—Elevation A



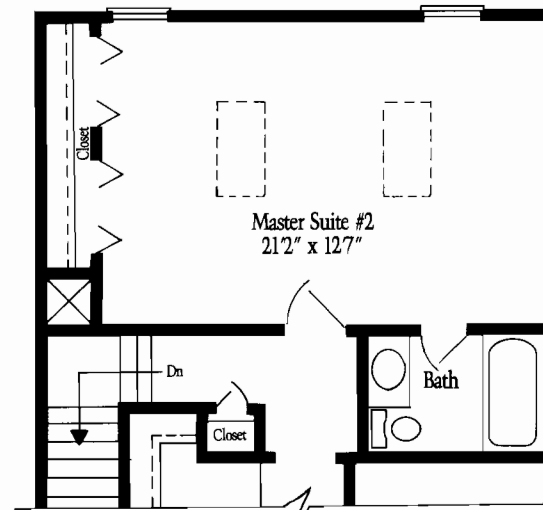
Basement Level with Garage



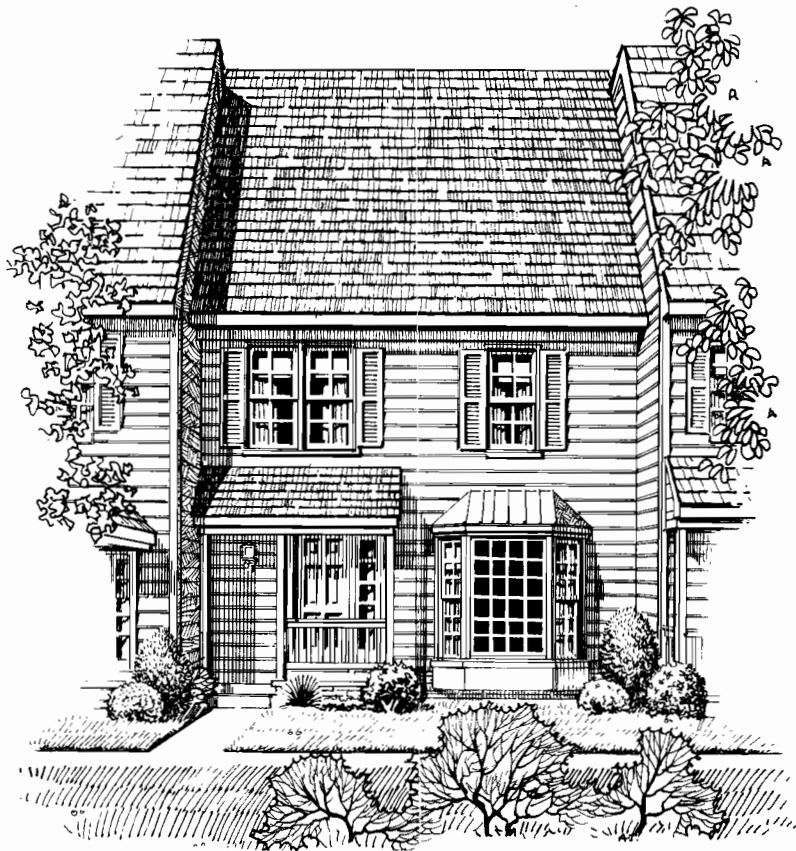
Basement Level



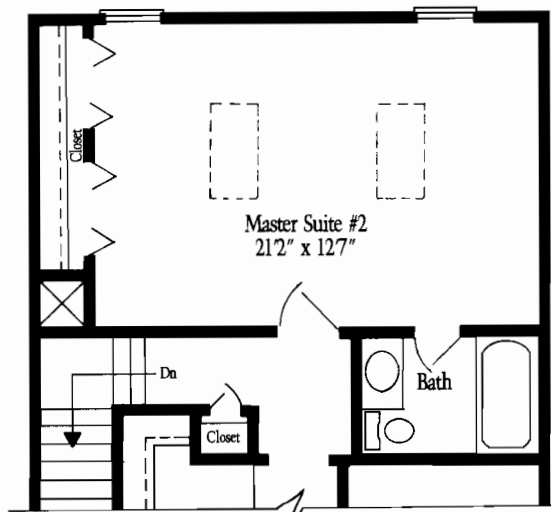
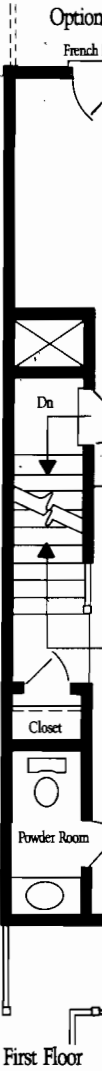
The Dorchester



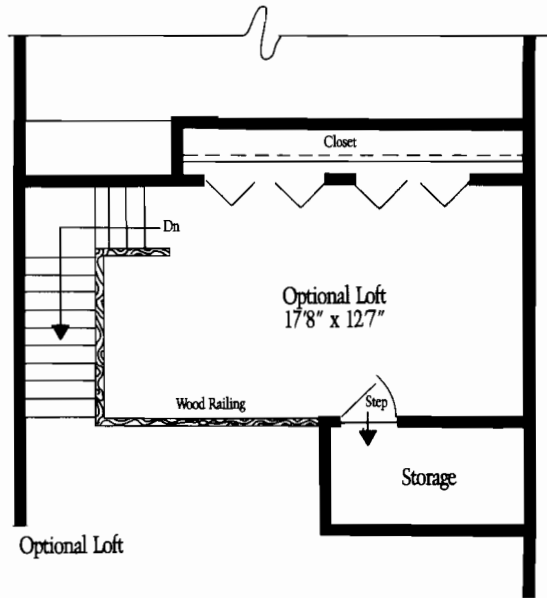
Alternate Second Floor Plan with Twin Master Suites



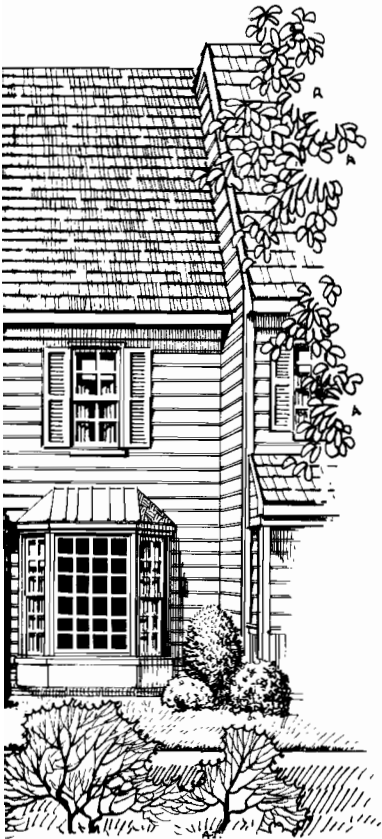
The Dorchester I—Elevation A



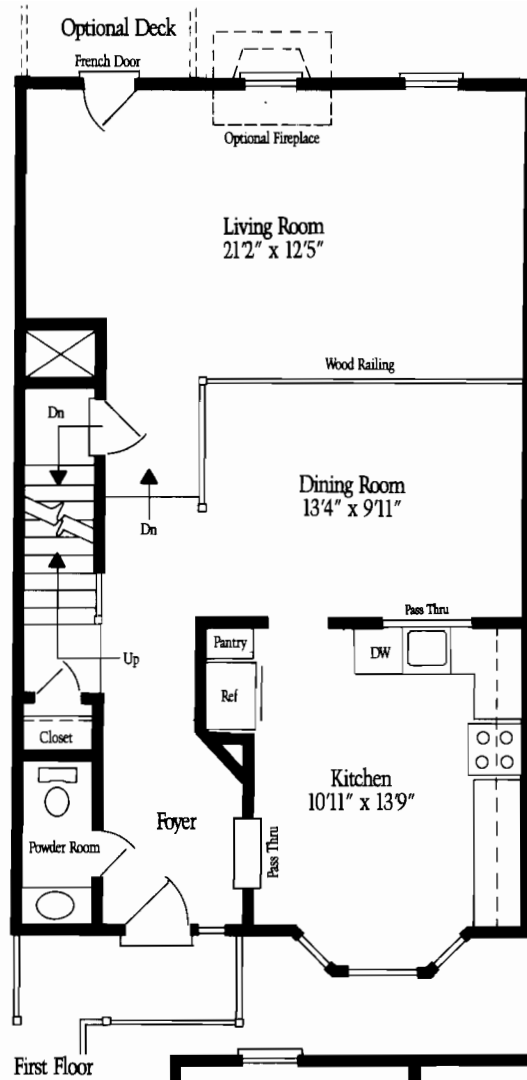
Alternate Second Floor Plan with Twin Master Suites



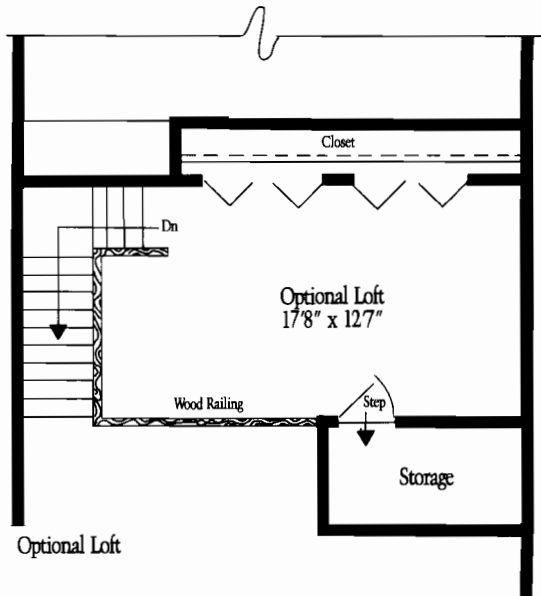
Optional Loft



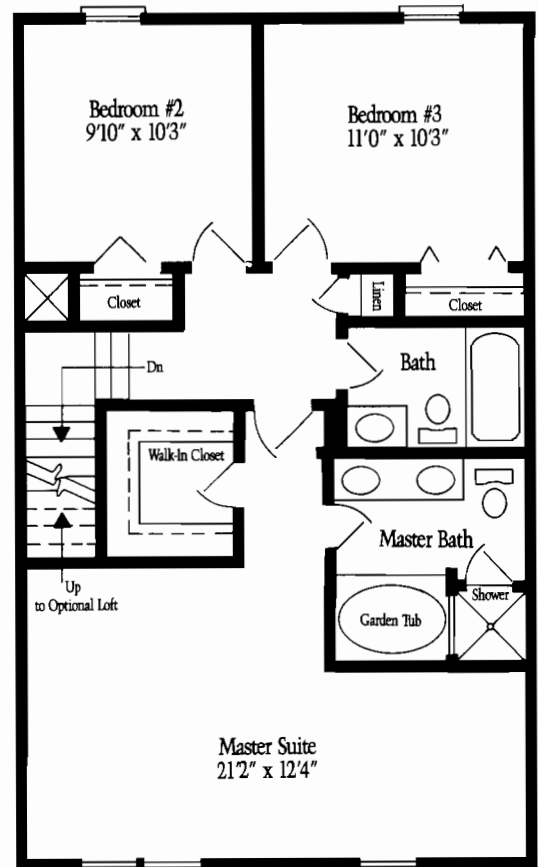
I—Elevation A



First Floor



Optional Loft



Standard Second Floor Plan with Three Bedrooms

Standard Features.

Custom Exterior:

- Predetermined coordinating exterior colors
- Brick and rough-sawn cedar siding
- Landscaped lots with foundation plantings
- Rust-proof aluminum gutters and downspouts
- Side yard fencing.

Custom Energy-Saving Package:

- R-30 attic insulation
- R-13 exterior walls
- Quality wood windows
- Triple-track storm windows with screens

Luxurious, ultra-spacious garage townes in Reston.

- Insulated metal front door
- Thermal insulated French doors
- Economical gas furnace for heating
- Central air conditioning

Deluxe Kitchens:

- G.E. 18 cu. ft. energy-saver frost-free refrigerator with automatic icemaker
- G.E. sound-insulated, dual-cycle energy-saver dishwasher
- G. E. disposal
- G. E. double oven electric range with self-cleaning lower oven

- Stainless steel sink with single-lever faucet
- Wood cabinets
- Easy-clean laminated self-edge countertops

Deluxe Bathrooms:

- Garden tubs and shower stalls
- Vanities with cultured marble tops
- Vanity mirrors
- Ceramic tile floors and tub and shower surrounds

Flooring:

- Wall-to-wall carpeting in a wide selection of colors in designated areas
- Resilient no-wax floors in kitchen and foyer

Interior Features:

- Wood-burning fireplace in recreation room
- Six-panel colonial doors
- Smoke detector
- Cathedral ceilings
- Step-down living room
- Decorator lighting fixtures
- Wood banisters and stair handrails
- Window shades
- Deadbolt locks

Laundry:

- 220-volt outlet for dryer
- Dryer vent
- Washer hook-up

General:

- Fixed TV antenna locations with antenna wire terminating in attic
- Prewired telephone locations
- 200-AMP circuit breaker electrical system
- Exterior 110-volt waterproof receptacle in rear
- Front and rear hose bibs
- Economical gas hot water heater
- Rough-in plumbing in basement

Community:

- Underground utilities
- Curb, gutter and sidewalks
- County water and sewer