

The architects at The Van Metre Company have designed the ultimate in elegant townhome living with the creation of the elaborately detailed Edinburgh.

This 3-level, end-unit townhome opens off a picturesque porch into a wide foyer, complete with powder room and coat closet. Up one step from the foyer lies the formal dining room which is separated from the 21-foot long living room by a graceful railing. The fully appointed kitchen with breakfast area adjoins the dining room.

The lower level offers an expansive recreation room with fireplace and a laundry/storage room. A garage is available, while a den and third full bath are optional.

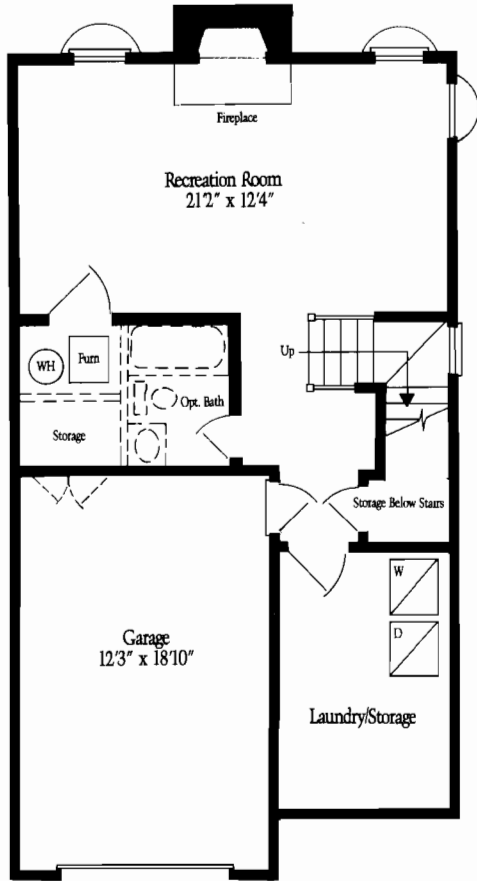
Atop the open stairway is the sleeping quarters with sumptuous master suite with imaginative master bath that features twin vanities and a garden tub with separate shower. (A loft that overlooks the master suite is optional.) To complete this level, you may choose between two additional full-size bedrooms or a second master suite with private bath with tub.

The Edinburgh

*The quintessential luxury
three-level townhome.*



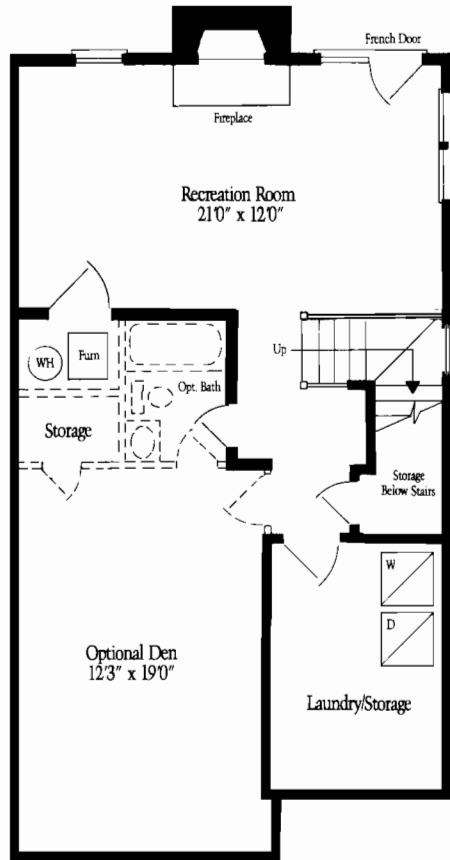
The Edinburgh II—Elevation A



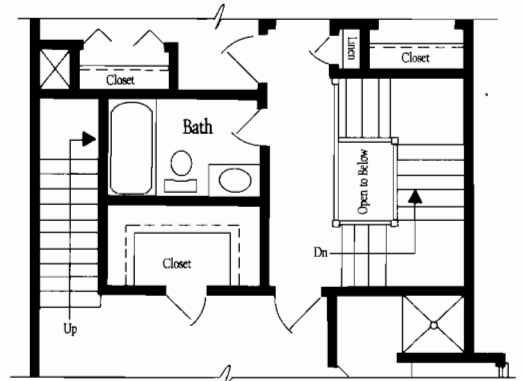
Basement Level with Garage



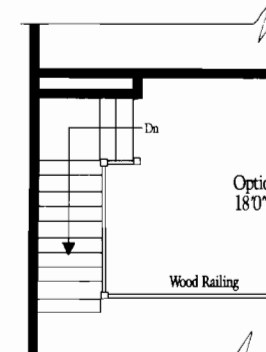
The Edinburgh



Basement Level



Alternate Second Floor with Stairs to Optional Loft



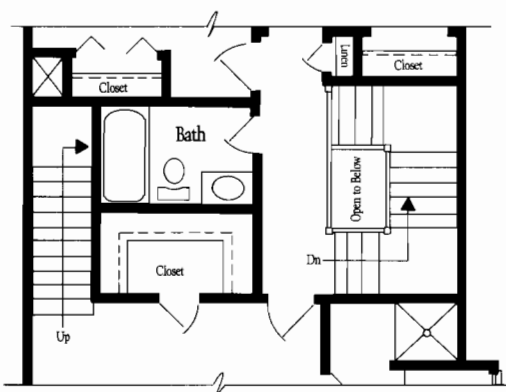
Optional Loft



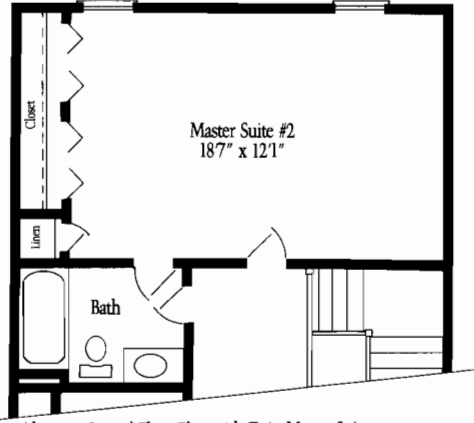
The Edinburgh I—Elevation A



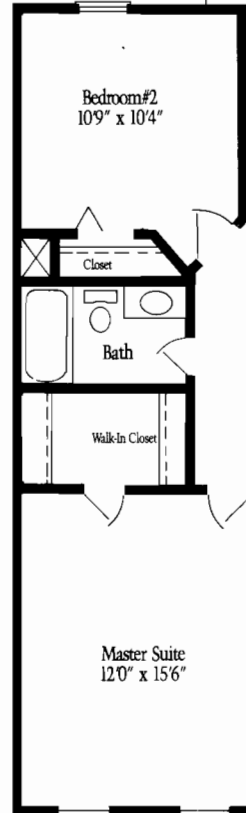
First Floor



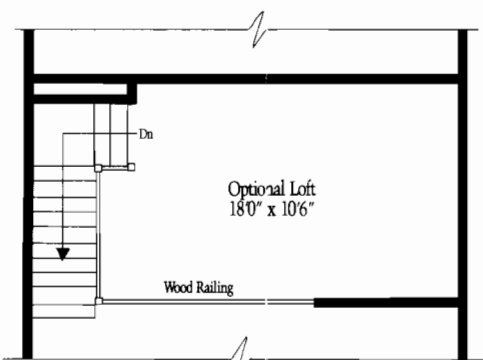
Alternate Second Floor with Stairs to Optional Loft



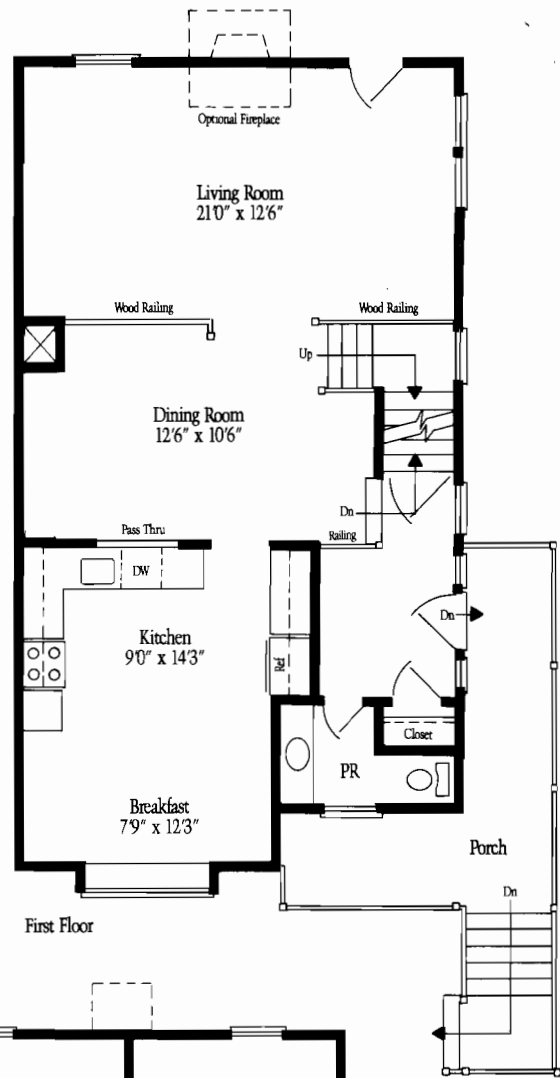
Alternate Second Floor Plan with Twin Master Suites



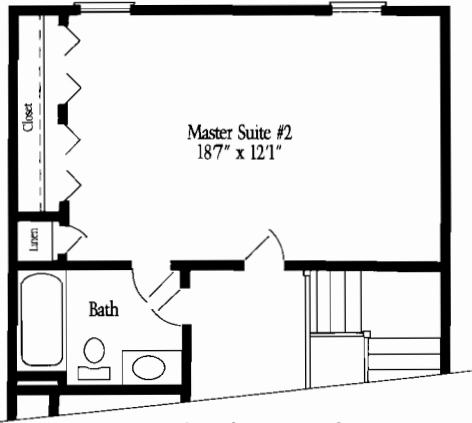
Standard Second Floor Plan with T



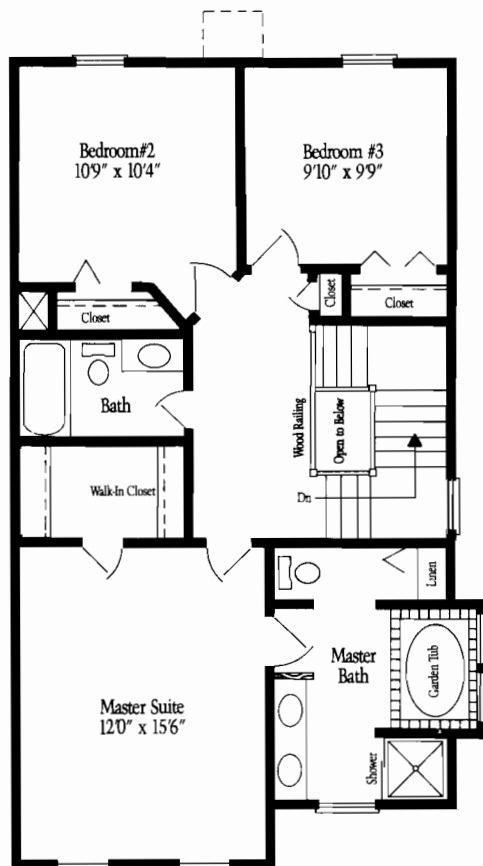
Optional Loft



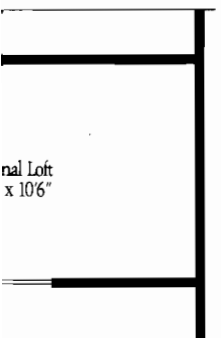
First Floor



Alternate Second Floor Plan with Twin Master Suites



Standard Second Floor Plan with Three Bedrooms



Standard Features.

Custom Exterior:

- Predetermined coordinating exterior colors
- Brick and rough-sawn cedar siding
- Landscaped lots with foundation plantings
- Rust-proof aluminum gutters and downspouts
- Side yard fencing.

Custom Energy-Saving Package:

- R-30 attic insulation
- R-13 exterior walls
- Quality wood windows
- Triple-track storm windows with screens

Luxurious, ultra-spacious garage townes in Reston.

- Insulated metal front door
- Thermal insulated French doors
- Economical gas furnace for heating
- Central air conditioning

Deluxe Kitchens:

- G.E. 18 cu. ft. energy-saver frost-free refrigerator with automatic icemaker
- G.E. sound-insulated, dual-cycle energy-saver dishwasher
- G. E. disposal
- G. E. double oven electric range with self-cleaning lower oven

- Stainless steel sink with single-lever faucet
- Wood cabinets
- Easy-clean laminated self-edge countertops

Deluxe Bathrooms:

- Garden tubs and shower stalls
- Vanities with cultured marble tops
- Vanity mirrors
- Ceramic tile floors and tub and shower surrounds

Flooring:

- Wall-to-wall carpeting in a wide selection of colors in designated areas
- Resilient no-wax floors in kitchen and foyer

Interior Features:

- Wood-burning fireplace in recreation room
- Six-panel colonial doors
- Smoke detector
- Cathedral ceilings
- Step-down living room
- Decorator lighting fixtures
- Wood banisters and stair handrails
- Window shades
- Deadbolt locks

Laundry:

- 220-volt outlet for dryer
- Dryer vent
- Washer hook-up

General:

- Fixed TV antenna locations with antenna wire terminating in attic
- Prewired telephone locations
- 200-AMP circuit breaker electrical system
- Exterior 110-volt waterproof receptacle in rear
- Front and rear hose bibs
- Economical gas hot water heater
- Rough-in plumbing in basement

Community:

- Underground utilities
- Curb, gutter and sidewalks
- County water and sewer