

Designed to live as large and as efficiently as a single-family home, The Southampton features spacious rooms with soaring ceilings with an imaginative traffic flow.

Off the entry foyer, this 3-level-with-optional-loft townhome opens to a formal elevated dining room overlooking the step-down living room.

The first-floor master suite includes a large walk-in closet and private bath with garden tub and separate shower. Both the master suite and living room can open onto an expansive deck at your option. The gourmet kitchen includes a breakfast nook. A powder room off the foyer complete this level.

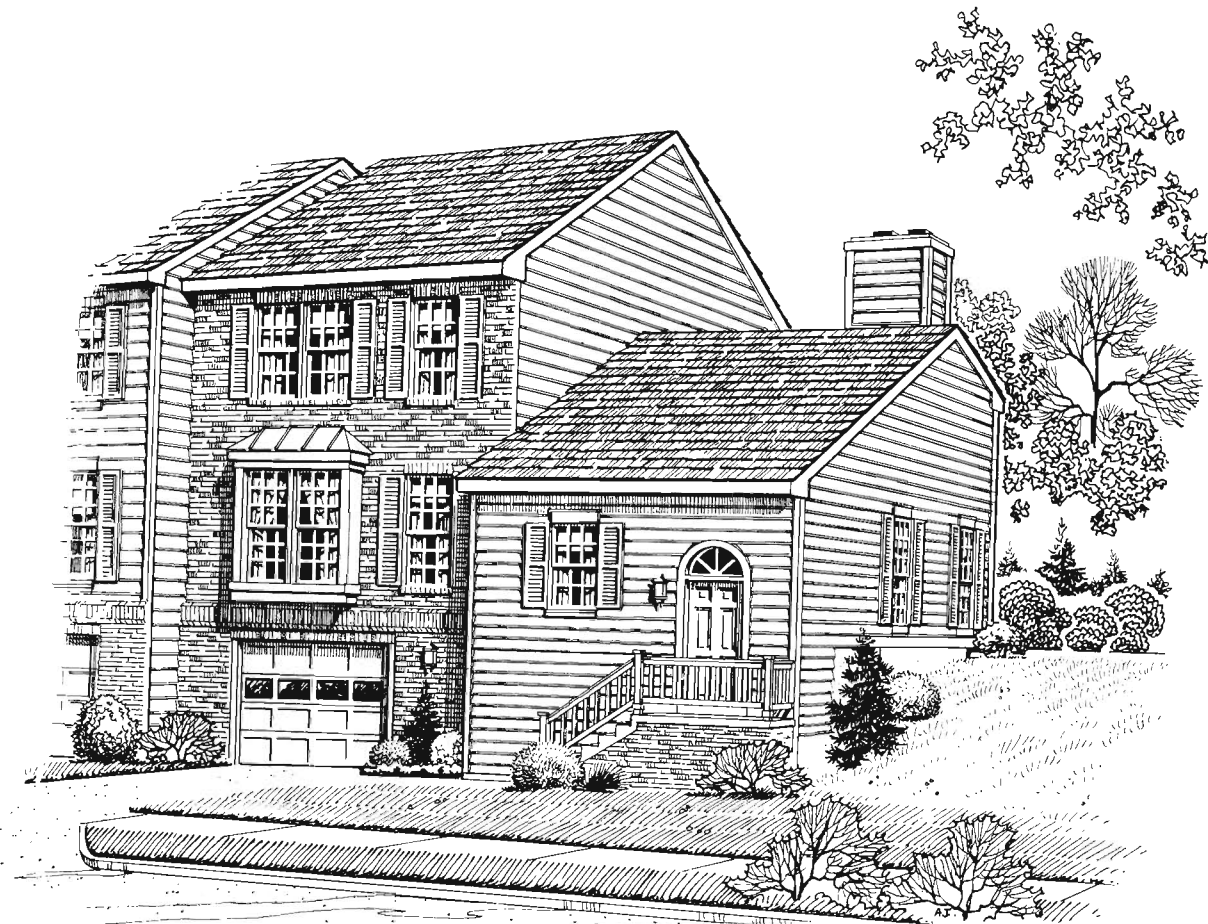
The lower level offers a spacious recreation room with fireplace. A garage is available; a den, powder room

or full bath are optional.

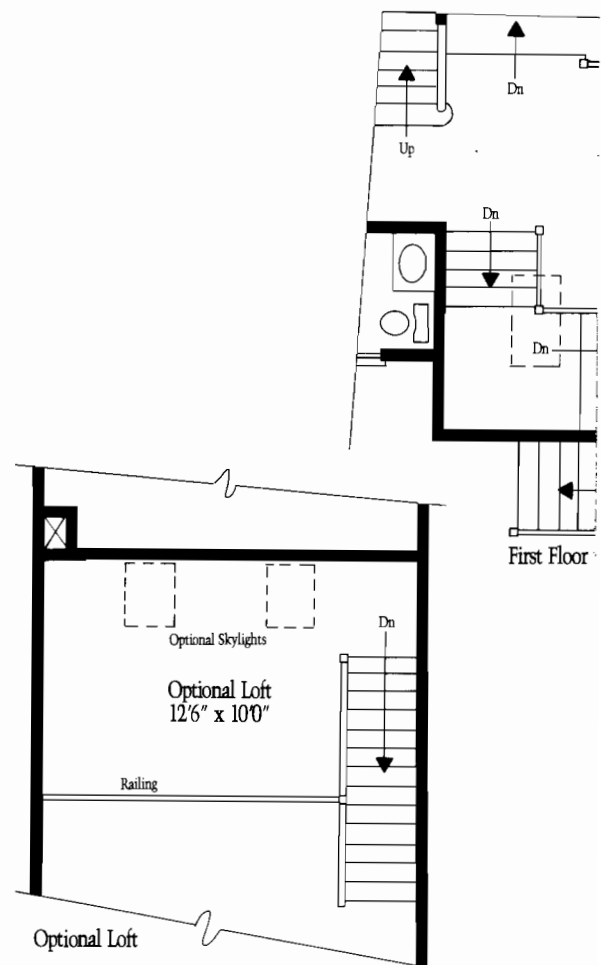
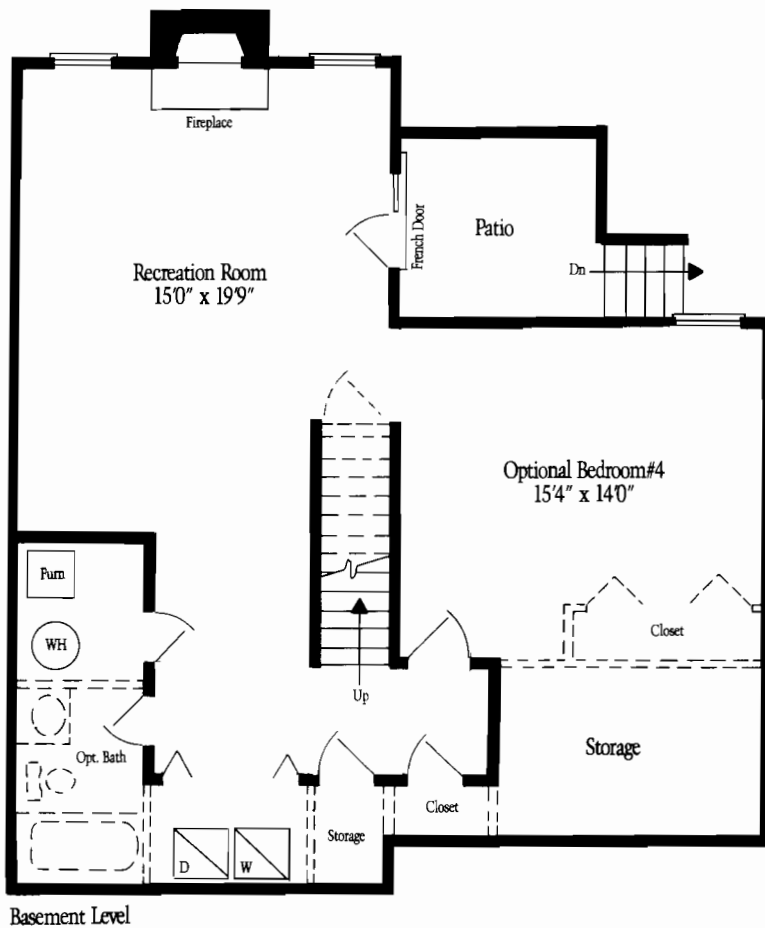
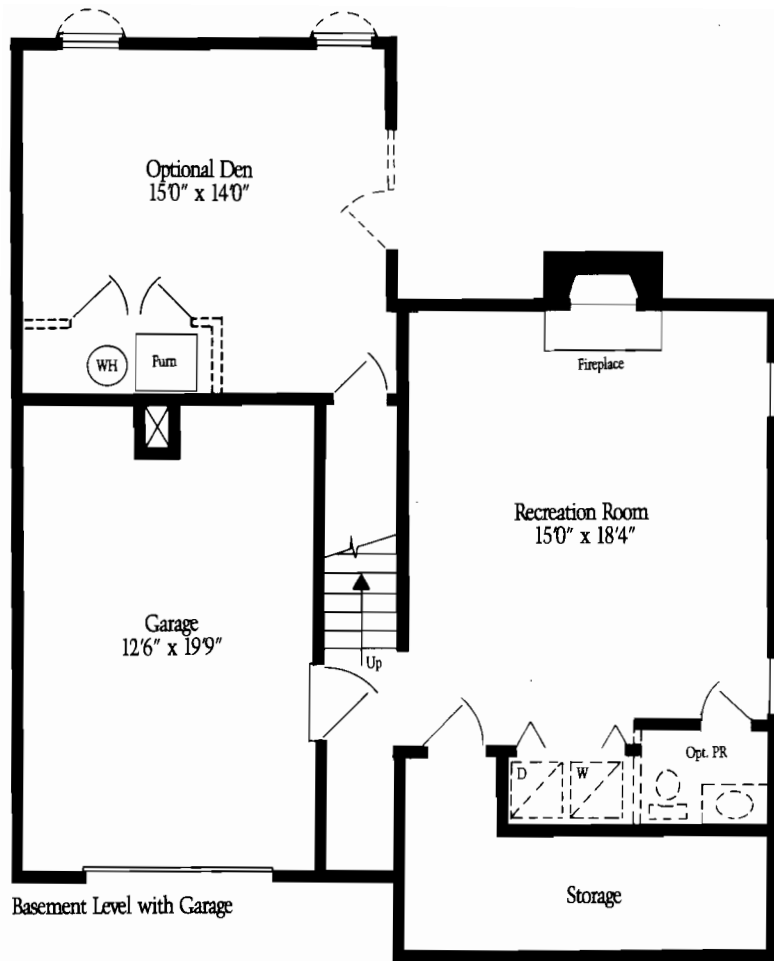
The upper level offers a second master suite with cathedral ceiling and private bath and a third large bedroom. A second full bath, a skylight in Bedroom #3 and a loft that overlooks the second master suite are optional.

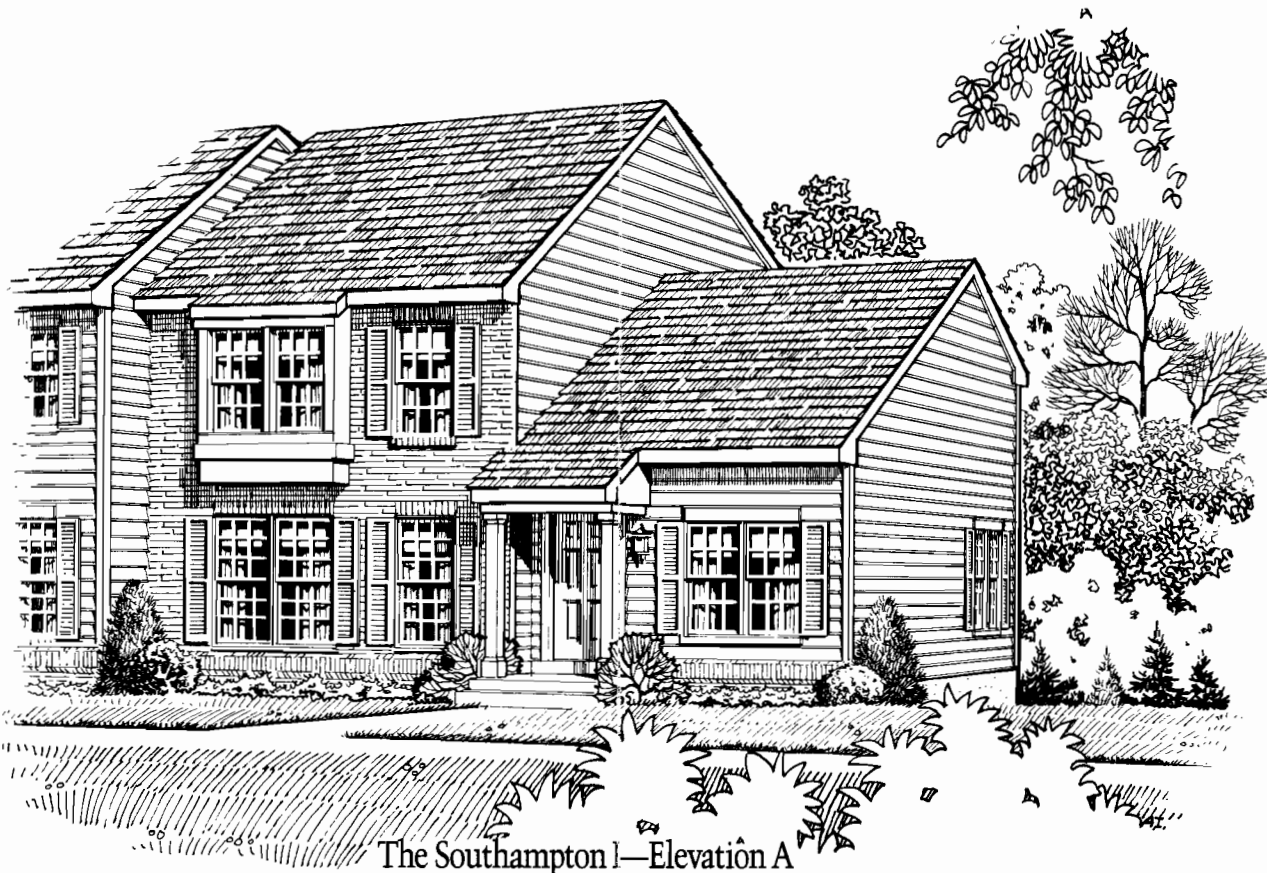
The Southampton:

*An ultra-spacious end-unit
with first-floor master suite.*

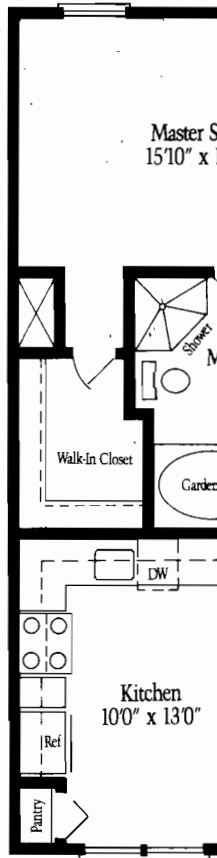


The Southampton II—Elevation B

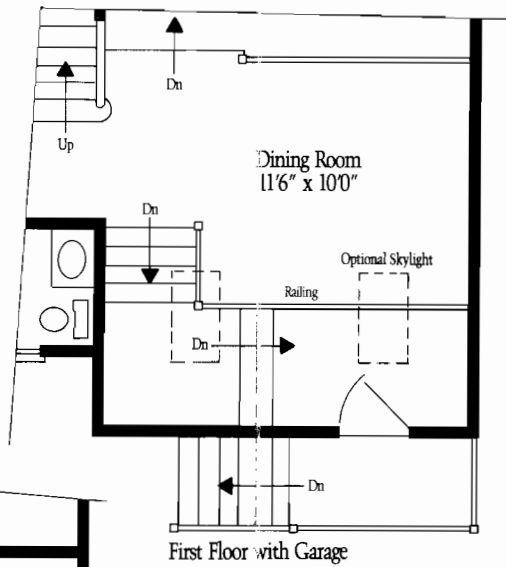




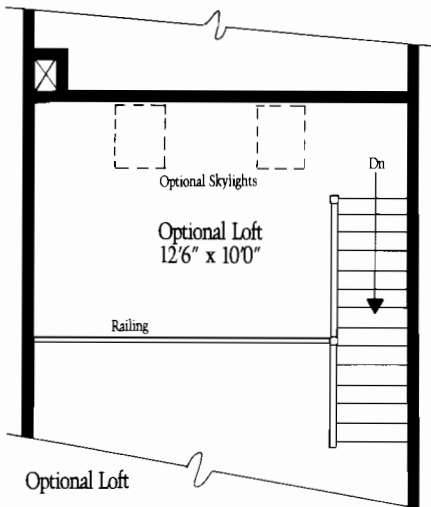
The Southampton I—Elevation A



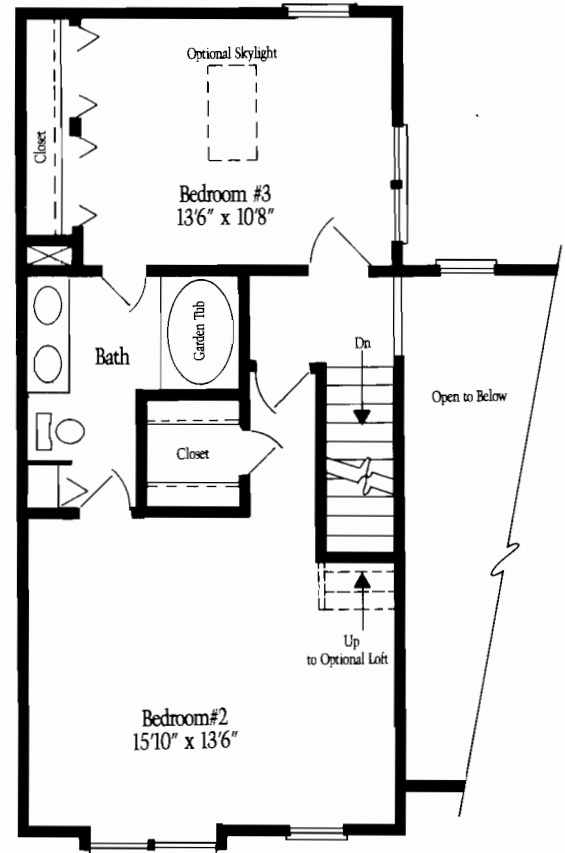
First Floor



First Floor with Garage



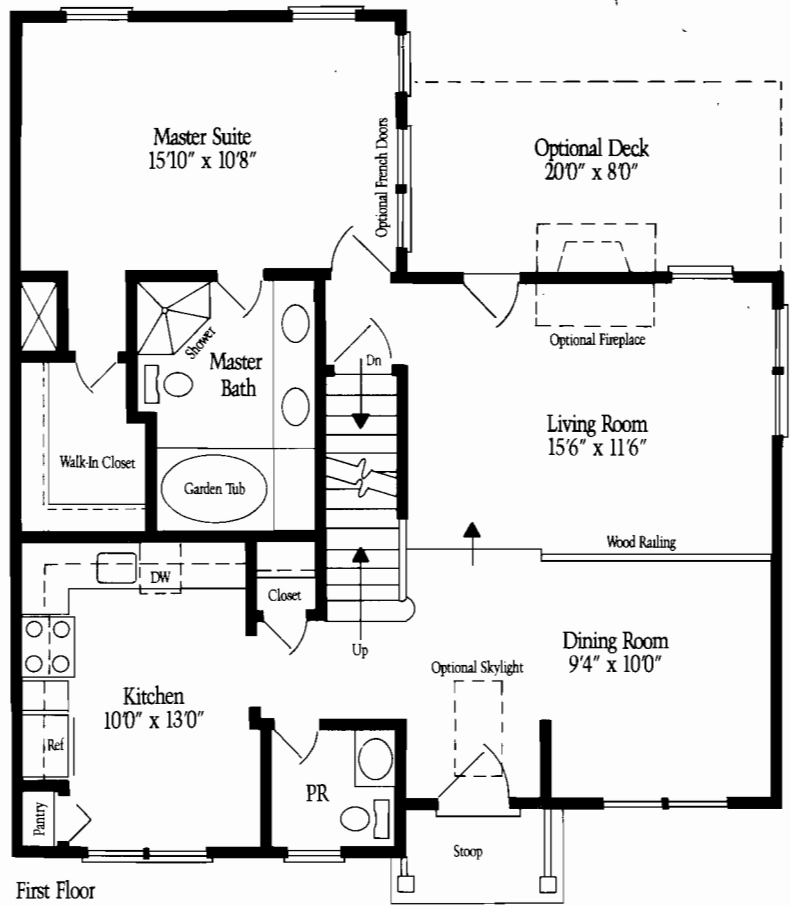
Optional Loft



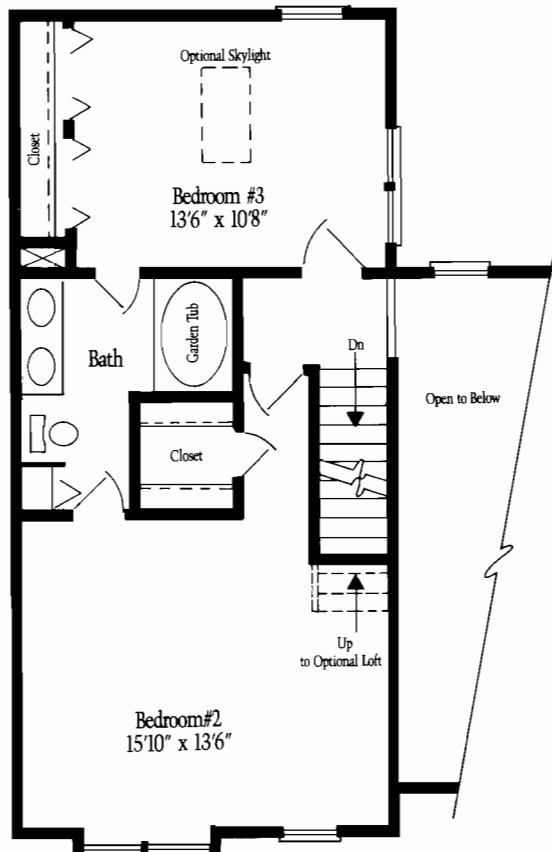
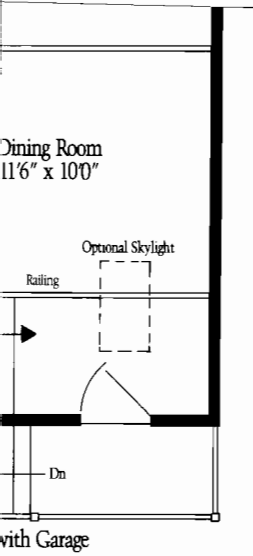
Standard Second Floor Plan with Three Bedrooms



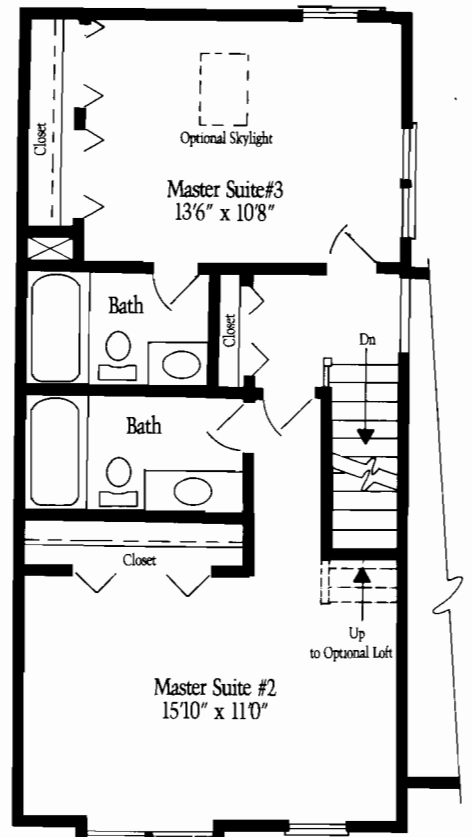
Elevation A



First Floor



Standard Second Floor Plan with Three Bedrooms



Alternate Second Floor Plan with Twin Master Suites

Standard Features.

Custom Exterior:

- Predetermined coordinating exterior colors
- Brick and rough-sawn cedar siding
- Landscaped lots with foundation plantings
- Rust-proof aluminum gutters and downspouts
- Side yard fencing.

Custom Energy-Saving Package:

- R-30 attic insulation
- R-13 exterior walls
- Quality wood windows
- Triple-track storm windows with screens

Luxurious, ultra-spacious garage townes in Reston.

- Insulated metal front door
- Thermal insulated French doors
- Economical gas furnace for heating
- Central air conditioning

Deluxe Kitchens:

- G.E. 18 cu. ft. energy-saver frost-free refrigerator with automatic icemaker
- G.E. sound-insulated, dual-cycle energy-saver dishwasher
- G. E. disposal
- G. E. double oven electric range with self-cleaning lower oven

- Stainless steel sink with single-lever faucet
- Wood cabinets
- Easy-clean laminated self-edge countertops

Deluxe Bathrooms:

- Garden tubs and shower stalls
- Vanities with cultured marble tops
- Vanity mirrors
- Ceramic tile floors and tub and shower surrounds

Flooring:

- Wall-to-wall carpeting in a wide selection of colors in designated areas
- Resilient no-wax floors in kitchen and foyer

Interior Features:

- Wood-burning fireplace in recreation room
- Six-panel colonial doors
- Smoke detector
- Cathedral ceilings
- Step-down living room
- Decorator lighting fixtures
- Wood banisters and stair handrails
- Window shades
- Deadbolt locks

Laundry:

- 220-volt outlet for dryer
- Dryer vent
- Washer hook-up

General:

- Fixed TV antenna locations with antenna wire terminating in attic
- Prewired telephone locations
- 200-AMP circuit breaker electrical system
- Exterior 110-volt waterproof receptacle in rear
- Front and rear hose bibs
- Economical gas hot water heater
- Rough-in plumbing in basement

Community:

- Underground utilities
- Curb, gutter and sidewalks
- County water and sewer